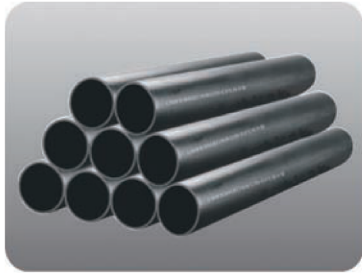


建筑用聚乙烯(HDPE)排水管道系统



HDPE 排水管
HDPE Pipe



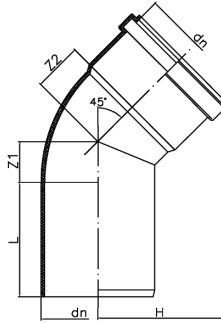
HDPE 3S静音管

规格 dn	壁厚	规格 dn	壁厚
50	3.0mm	125	4.8
75	3.0mm	160	6.2
90	3.5mm	200	7.7
110	4.2mm	250	9.6

执行标准：虹吸、同层排水管材，
管件执行国家行业标准CJ/T 250-2007。
国际标准ISO8770：2003和欧洲标准EN1519-1:1999
管材采用著名品牌PE100级高密度聚乙烯树脂制造，
管件采用PE80制造。



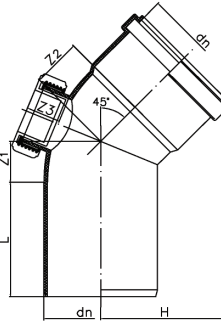
45° 单承口弯头
Elbow 45° with single socket



规格 dn	Z1	Z2	L	H
50	11	19	50	61
75	17	22	56	76
90	20	29	60	90
110	25	29	63	96
160	28	36	75	128



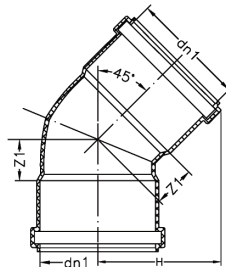
45° 单承口弯头 (带口)
Elbow 45° with single socket & inspection opening



规格 dn	Z1	Z2	Z3	L	H
50	11	19	21.5	50	61
75	17	22	22.5	56	76
110	25	31	27	63	96
160	36	44	36	75	128



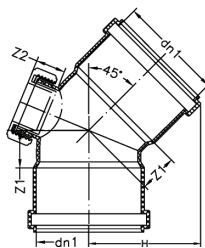
45° 弯头
Elbow 45°



规格 dn	Z1	H
50	13.5	61
75	19	76
110	27	96
125	35	100
160	36	108
200	55	128



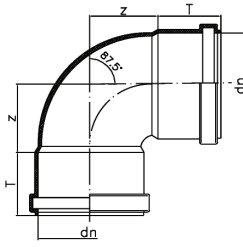
45° 弯头 (带口)
Elbow 45° with inspection opening



规格 dn	Z1	Z2	H
50	13.5	21	61
75	19	22.5	76
110	27	27	96
125	35	29	100
160	36	34	108
200	55	34	128



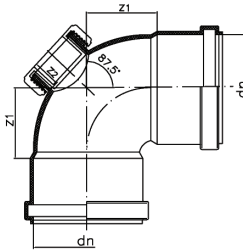
87.5° 弯头
Elbow 87.5°



规格 dn	Z	T
50	40	41
75	45	46
90	58	48
110	70	52
125	72	60
160	90	65
200	120	79



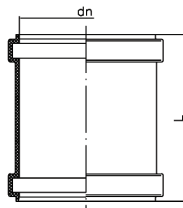
87.5° 弯头 (带口)
Elbow 87.5° with inspection opening



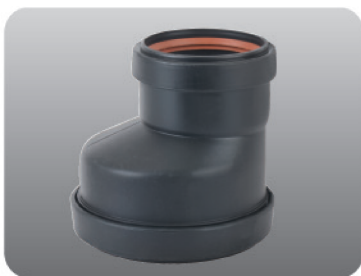
规格 dn	Z1	Z2
50	40	22
75	45	21.5
110	70	25
125	72	30
160	90	35
200	120	36



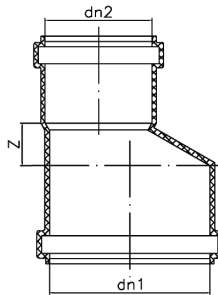
管套
Socket



规格 dn	L
50	84
75	94
110	107
125	117
160	134
200	180



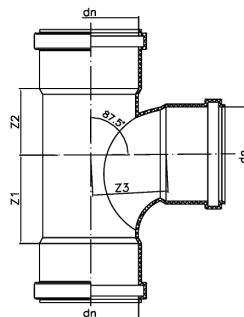
异径直接
Reduced straight union



dn1 × dn2	Z
75×50	18
90×50	26
90×75	25
110×50	36
110×75	23
110×90	25
125×110	15
160×110	35
160×125	46
160×50	59
160×75	54
200×110	48
200×160	39



顺水三通
Double Socket Reducing Branch

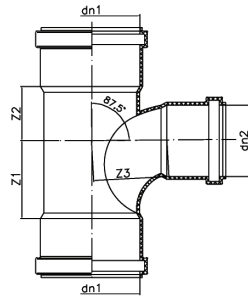


规格 dn	Z1	Z2	Z3
50	34	26	35
75	49	39	52
90	60	48	64
110	70	57	76
125	80	64	86
160	101	82	110
200	130	110	130

建筑用聚乙烯(HDPE)排水管道系统



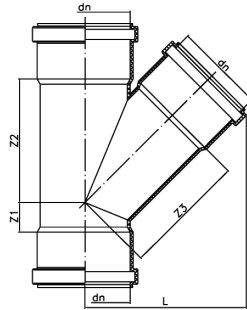
异径三通
Reduced Tee



dn1 × dn2	Z1	Z2	Z3
75×50	36	26	48
110×50	40	37	70
110×75	52.5	49.5	73
125×110	76	68	82.5
160×50	77.5	63.5	100
160×75	77.5	63.5	100
160×110	97.5	83.5	100
200×110	116	95	152
200×160	116	95	132



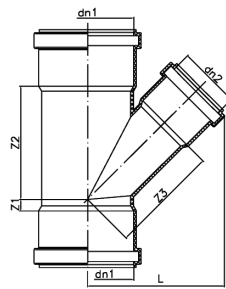
45° 斜三通
Triple Socket Reducing Branch 45°



规格 dn	Z1	Z2	Z3	L
50	13	64	64	94
75	18	94	94	128
90	22	120	120	154
110	25	138	138	176
125	27	157	157	200
160	34	199	199	246
200	55	255	255	310



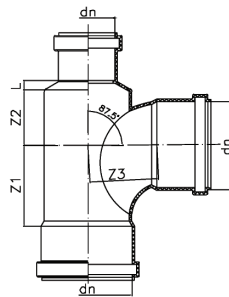
异径斜三通
Reducing oblique Tee



dn1 × dn2	Z1	Z2	Z3	L
75×50	3.5	76	81	104
90×50	22	120	127	139
90×75	22	120	122	148
110×50	-16	95	112	127
110×75	0	115	123	148
160×50	-19	141	164	165
160×75	-19	141	158	175
160×110	0	165	175	203
200×160	35	235	241	282



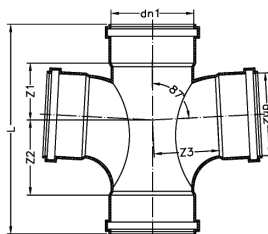
瓶型三通
Bottle-shaped Tee



dn	Z1	Z2	Z3	L
110×50	40	37	70	18
110×75	69	85	75	17



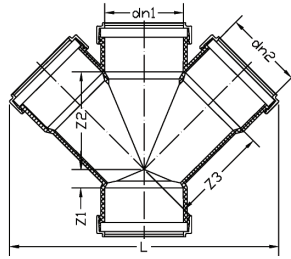
平面四通
Cross



dn1 × dn2	Z1	Z2	Z3	L
160×160	84.5	99	112	293.5
160×110	84.5	99	101	293.5
110×110	56	69	75	219
110×75	36	39	66	200
110×50	36	39	71	200
75×75	48.5	38.5	51.5	170
50×50	26	34	35	132.6



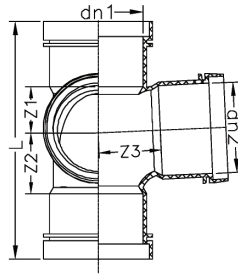
45° 斜四通
45° Reducing Cross



dn1 × dn2	Z1	Z2	Z3	L
160×160	42	202	202	496
160×110	42	202	176	406
110×110	26.5	138	138	352
110×75	26.5	138	122	295
110×50	26.5	138	110	255
75×75	17.5	93.5	93.5	258
50×50	13	64	64	190



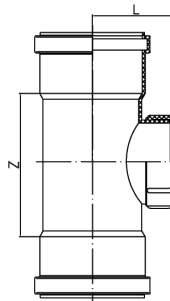
立体四通
Right-angle Cross



dn1 × dn2	Z1	Z2	Z3	L
160X110	84.5	99	101	293.5
110X110	56	69	75	219



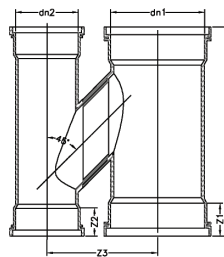
立管检查口
Pipe riser with inspection opening



规格 dn	Z	L
50	62	47
75	92	62
110	136	82
125	144	91
160	175	116
200	190	135



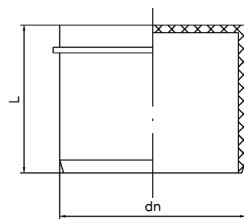
防反流H管
Anti-reflux H pipe



dn1 × dn2	Z1	Z2	Z3	L
75×75	43	43	160	375
110×75	46	43	160	375
110×110	46	46	160	375
160×110	55	46	185	375
160×160	55	55	210	375



管帽
Cap

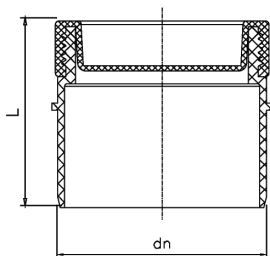


规格 dn	L
50	40
75	46.5
110	54
125	60
160	78
200	111

建筑用聚乙烯(HDPE)排水管道系统



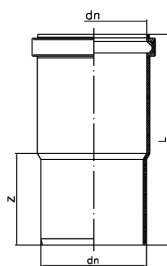
清扫口
Cleaness Socket



规格 dn	L
50	32.5
75	37.5
110	42.5
125	50
160	57
200	91



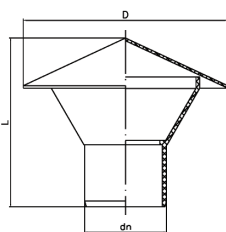
伸缩节 (直接头)
Extension Element



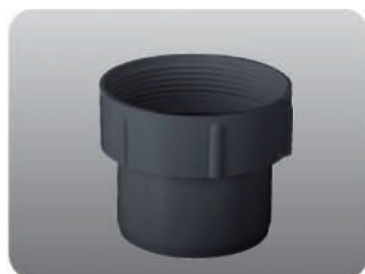
规格 dn	Z	T
50	111	206
75	111	206
110	104	206
125	105	206
160	150	206



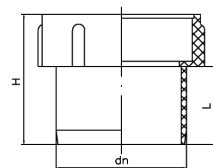
透气帽
Ventilation Cowl



规格 dn	D	L
50	125	103
75	151	112
110	186	126
125	202	134
160	238	150



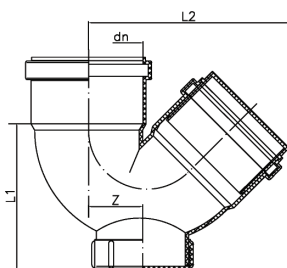
水池接头
Basin Connector



规格 dn	H	L
50	50	30



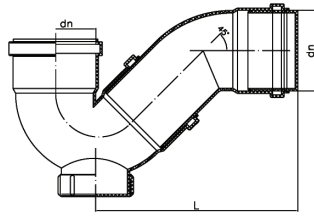
存水弯 (带口)
Adjustable trap with inspection opening



规格 dn	L1	L2	Z
50	83	105	25
75	166	185	50
110	160	198	45
125	190	216	50
160	240	290	81



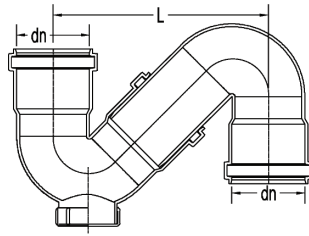
P型存水弯
P Type Adjustable Trap



规格 dn	L
50	164
75	206
110	258



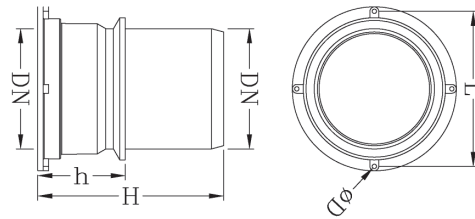
S型存水弯
S Type Adjustable Trap



规格 dn	L
50	155
75	282
110	290
160	525



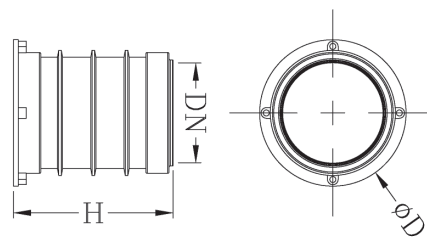
预埋节
Preburied Jointer



DN	H	h	L	D
50	170	80	82	4
110	170	80	172	4



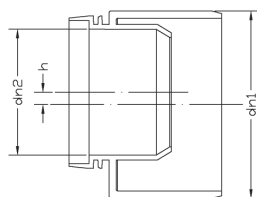
预埋管套
Preburied Jointer



DN	H	D
50	120	80
75	120	110
110	120	148

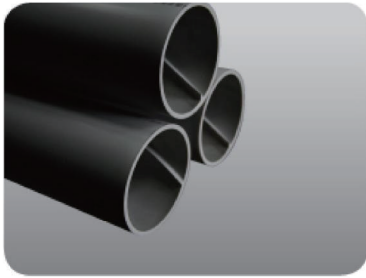


补芯
Bushing



公称直径 (mm)	设计尺寸 (mm)
dn1 × dn2	H
110 × 50	22
110 × 75	8
160 × 110	14

建筑用聚乙烯(HDPE)排水管道系统



HDPE单叶片特殊管材
HTPE Rise Pipe with 1 screw line

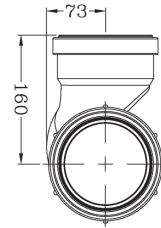
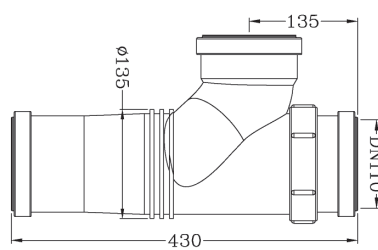
第四代 (HDPE) 单叶片单立管系统

规格 dn	筋高
110x3.8mm	6mm

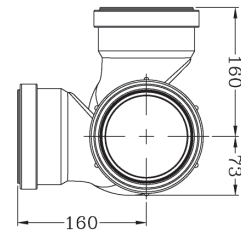
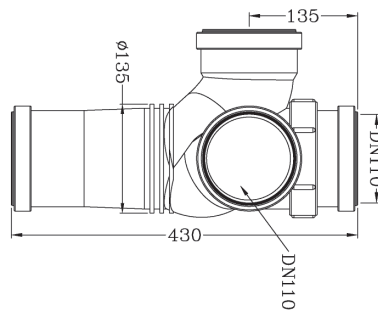
备注：1、使用专业的倒角机，将管端倒角15° -30°，坡口厚度约为壁厚的1/2-1/3；
2、将管材内叶片用剪刀或专用内外倒角机，剪去内筋15° -30°，以免挂脏物。



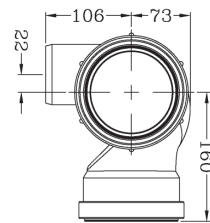
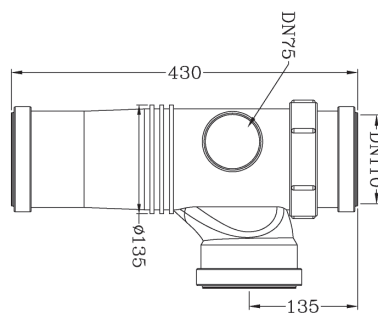
dn110漩流三通
dn110 Whirl tee



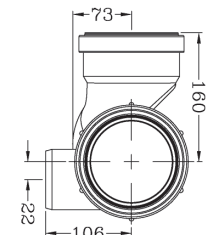
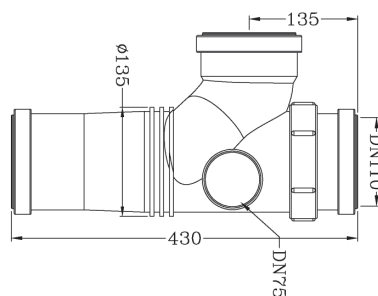
dn110漩流直角四通
dn110 Whirl cross



dn110漩流右四通
dn110 Whirl 4 way (right)

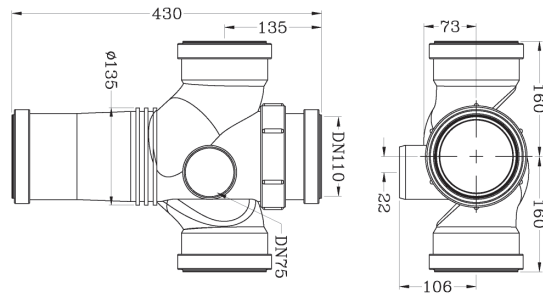


dn110漩流左四通
dn110 Whirl 4 way (left)

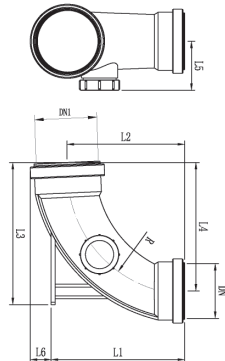




dn110 旋流180°四通
dn110 Whirl 4 way



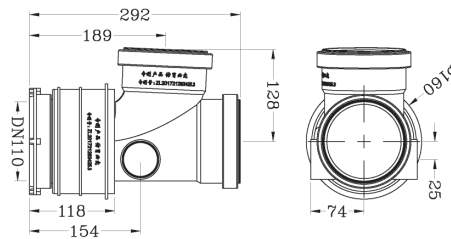
底部变径大弧度
Reducing large radius elbow



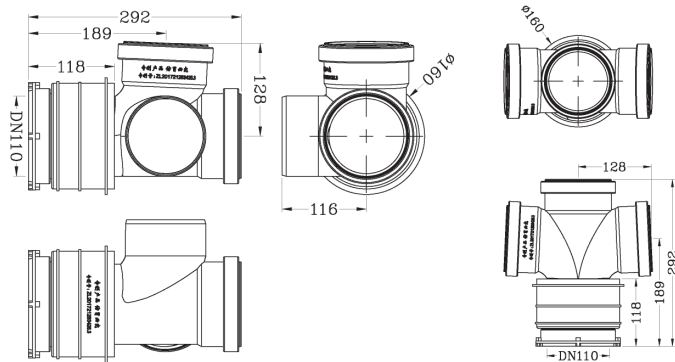
DN	DN1	L1	L2	L3	L4	L5	L6	R
110	160	282	240	298	270	105	52	253
110	125	272	240	290	262	100	43	251
110	110	262	253	281	253	95	42	247
125	160	287	245	296	268	105	52	274
160	160	380	396	423	400	-	111	400



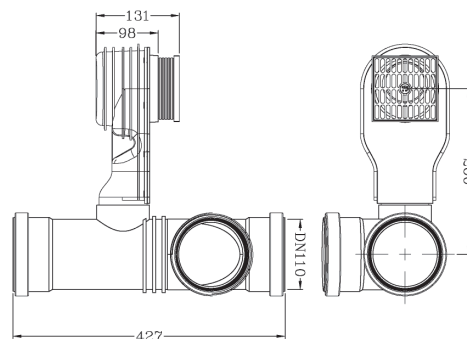
立管积水排出器(三通)
Riser water trap



立管积水排除器(立体四通)
Right angle



零降板同层排水汇集器
Same FLOOR Drainage System



建筑用聚乙烯(HDPE)排水管道系统



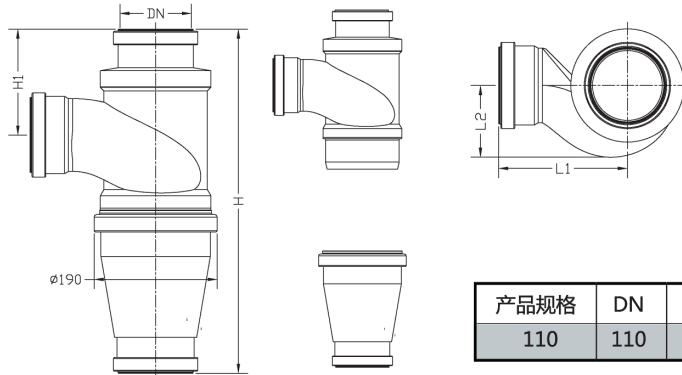
HDPE 3S 内螺旋静音管

HDPE特殊单立管排水系统

规格 dn	筋高
110x3.8mm	3mm



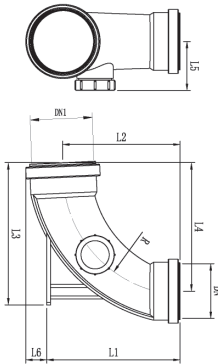
dn110 旋流三通
Whirl Tee



产品规格	DN	L1	L2	H	H1
110	110	195	108	510	164



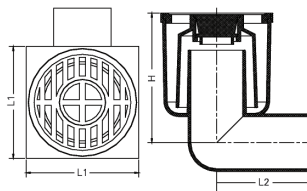
底部变径大弧弯
Reducing large radius elbow



DN	DN1	L1	L2	L3	L4	L5	L6	R
110	160	282	240	298	270	105	52	253
110	125	272	240	290	262	100	43	251
110	110	262	253	281	253	95	42	247
125	160	287	245	296	268	105	52	274
160	160	380	396	423	400	-	111	400



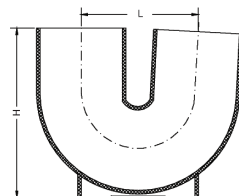
同层排水地漏
Floor drain for same-layer water drainage



规格 dn	L1	L2	H
50	98	82.5	112.7



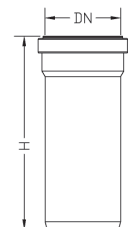
同层排水U弯
U trap for same-layer water drainage



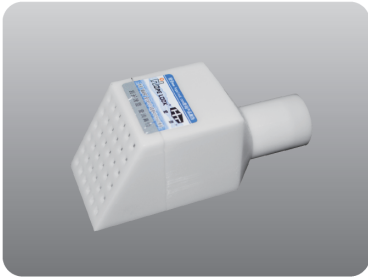
规格 dn	H	L
50	93	65.5



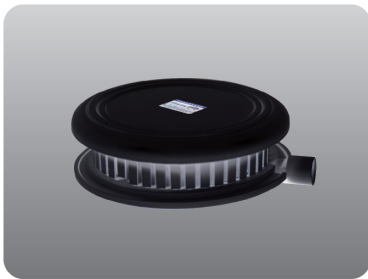
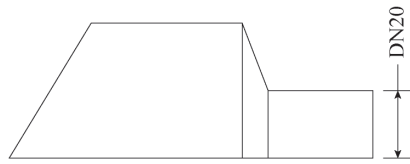
dn110 导流接头
Diversion Joint



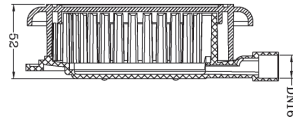
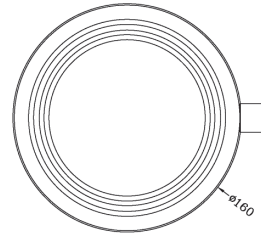
产品规格	DN	H
110	110	320



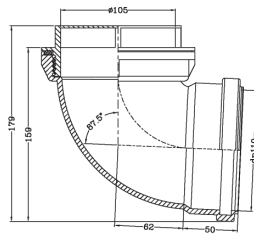
小型积水排除器
Mini Water Eliminator



同层积水排除器
Catchment for Same Floor Drainage



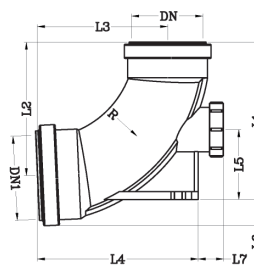
同层下排水坐便器90° 弯头
90° Elbow for Same Floor



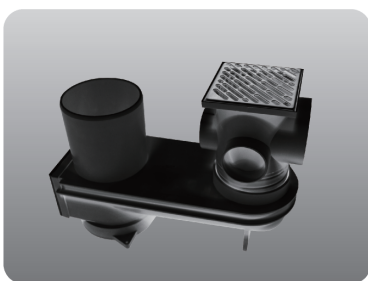
规格 dn	L	H1	H2
90	106	139	159
110	112	159	179



中弯
Elbow with Middle Radian



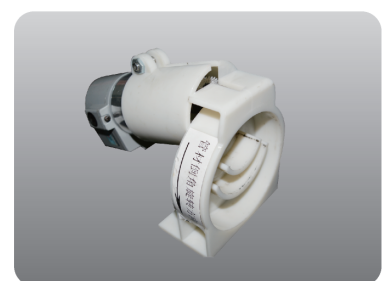
规格 dn	DN1	L1	L2	L3	L4	L5	L6	L7	R
100	110	216	180	175	210	85	29	38	180
100	125	236	200	196	241	105	39	38	200
125	125	240	204	196	241	105	39	38	200



零降板汇集器
Water Collector with Zero Drop Board



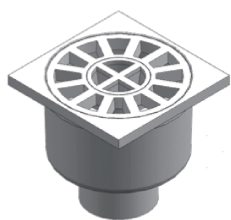
洗衣机排水密封橡胶
Rubber Sealing for Washing Machine Drainage



电动倒角器
Electric Chamfer

宏添地漏一览表

符号示意：Z-直排 C-侧排 F-方形面板 Y-圆形面板 J-金属不锈钢面板 S-塑料面板 U-有水封 M-预埋



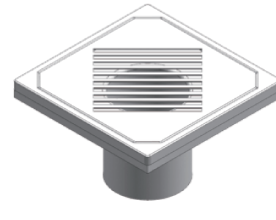
1. 洗衣机地漏
(ZFSU50-1)



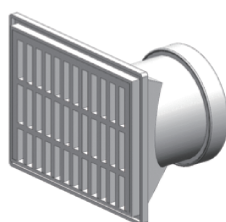
2. 高水封洗衣机地漏
(ZFSU50-2)(ZFSU75-2)



3. 方形地漏
(ZFSU75) (ZFSU110)



4. 不锈钢直排地漏
(ZFJ50-FB)(ZFJ75-FB)
(ZFJ110-FB)(ZFJ160-FB)



5. 侧墙地漏
(CFS50)(CFS75)(CFS110)



6. 多通道地漏
(CFJU75)



7. 八公分侧排地漏
(CFSU50-2)



8. 精装修专用地漏
(CYJU50)



9. 同层排水侧排专用地漏
(CYJU50)



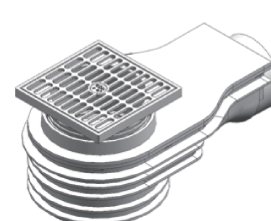
10. 不锈钢方面板地漏
(ZFJU50)(ZFJU75)



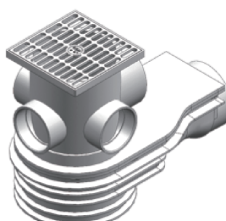
11. 不锈钢圆面板地漏
(ZYJU75)(ZYJUM75)
(ZYJU110)(ZYJUM110)



12. 零降板阳台地漏
(ZFJU75-YT)



13. 零降板地漏
(CFJU50-LJB-1)



14. 零降板多通道地漏
(CFJU50-LJB-2)



15. 多通道翻板地漏
(CFJU50-FB)



16. 防干涸地漏
(CFJU50-FGH)



17. 同层侧排洗衣机地漏
(CYSU50)



18. 预埋直排地漏
(ZYS50) (ZYS75)
(ZYS110)



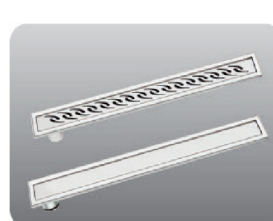
19. 单(双)通道地漏
(CFJU50-D) (CFJU50-S)



20. 直排地漏
(ZFJU50-2)



21. 墙排地漏
(CJ75)



22. 淋浴房地漏
(ZFJ50)



23. 预埋地漏
(ZFJUM50)(ZFJUM75)